

# RAD-IN+OUT-2D-1A-I


Order No.: 2867322



<http://eshop.phoenixcontact.de/phoenix/treeViewClick.do?UID=2867322>

Analog /digital module for 2 digital inputs/outputs and 1 analog input/output



Commercial data	
GTIN (EAN)	 4 017918 960636
sales group	H174
Pack	1 pcs.
Customs tariff	85177090
Catalog page information	Page 611 (IF-2009)

#### Product notes

WEEE/RoHS-compliant since:  
04/22/2008



<http://www.download.phoenixcontact.com>  
Please note that the data given here has been taken from the online catalog. For comprehensive information and data, please refer to the user documentation. The General Terms and Conditions of Use apply to Internet downloads.

Technical data	
<b>Analog input</b>	
Description of the input	Current input
Current input signal	4 mA ... 20 mA
Input resistance current input	< 170 Ω

**Analog output**

Output name	Current output
Load/output load current output	700 $\Omega$ (at $U_B = 24$ V, $R_B = [U_B - 10$ V] / 20 mA)

**Digital input**

Input voltage range	5 V AC/DC ... 30 V AC/DC
Switching threshold "0" signal, voltage	max. 1.5 V DC
Switching threshold "1" signal voltage	min. 5 V DC

**Digital output**

Output name	Relay output
Number of outputs	2
Maximum switching voltage	30 V AC/DC (EC Declaration of Conformity)
	30 V DC (With UL approval)
	250 V AC (With UL approval)
Limiting continuous current	0.5 A (EC Declaration of Conformity)

**General data**

Width	22.5 mm
Height	99 mm
Depth	114.5 mm
Ambient temperature (operation)	-20 °C ... 65 °C
Ambient temperature (storage/transport)	-40 °C ... 85 °C
Degree of protection	IP20
Mounting position	Any
Assembly instructions	on TS 35 profile rail acc. to EN 60715
Housing material	Polyamide PA non-reinforced
Conformance	CE-compliant
ATEX	Ex II 3 G EEx nL IIC
IECEX	Ex nL IIC T5
UL, USA / Canada	Class I, Div. 2, Groups A, B, C, D

**Connection data**

Conductor cross section solid min.	0.2 mm <sup>2</sup>
Conductor cross section solid max.	4 mm <sup>2</sup>
Conductor cross section stranded min.	0.2 mm <sup>2</sup>
Conductor cross section stranded max.	2.5 mm <sup>2</sup>

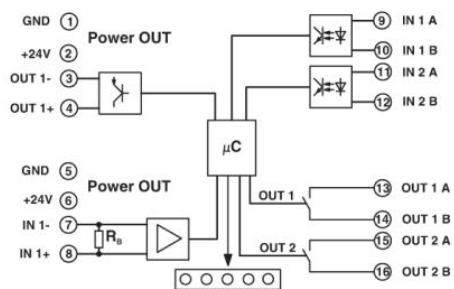
Conductor cross section AWG/kcmil min.	24
Conductor cross section AWG/kcmil max	14
Type of connection	Screw connection
Stripping length	8 mm
Screw thread	M3

**Certificates / Approvals**

Certification Ex: CUL-EX LIS, IECEX, UL-EX LIS

**Diagrams/Drawings**

Block diagram



**Address**

PHOENIX CONTACT Deutschland GmbH  
Flachmarktstr. 8  
32825 Blomberg, Germany  
Phone +49 5235 3 12000  
Fax +49 5235 3 41200  
<http://www.phoenixcontact.de>



© 2011 Phoenix Contact  
Technical modifications reserved;